

Qualify JIRA Integration

Partner Briefing



Original Software

CONTENTS

INTRODUCTION	2
QUALIFY PLUG-IN ARCHITECTURE	2
External Data Source	2
User Interface Extension	2
Test Execution Engine	3
JIRA INTEGRATION	4
External Data Source	4
User Interface Extension	5
Test Execution Engine	6



INTRODUCTION

JIRA, by Atlassian, is a product that is used by a number of Original Software customers, and prospective customers. Usage ranges from the traditional JIRA bug-tracking capability to support for Agile development using the JIRA Agile plug-in. Typically, the use of JIRA has been driven by development teams with QA and testing teams being asked to work with JIRA so they can collaborate effectively with the development teams.

Original Software has produced a module for the Qualify plug-in architecture to enable effective integration of Qualify with JIRA. With this integration, Qualify still remains the primary workbench for the QA and testing teams.

QUALIFY PLUG-IN ARCHITECTURE

The Qualify plug-in architecture provides a standard mechanism by which third-party applications can be integrated into Qualify application definitions.

The Qualify plug-in architecture provides three points of integration:

- External Data Source
- User Interface Extension
- Test Execution Engine

Any module developed may support one or more of these capabilities.

External Data Source

An External Data Source provides the ability for Qualify to display data from a third-party application. Using an external data source, an External Entity can be defined in a Qualify application definition which will read data from the third-party application. Items in the External Entity can be linked to Qualify items with Qualify maintaining the relationship links. An External Entity can be used to display third-party data in a grid and/or as a source for Picklist values.

User Interface Extension

The User Interface Extension provides a mechanism for allowing third-party items to be maintained from Qualify. Typically, a User Interface Extension will invoke the user interface of the third-party application but it is possible to develop a user interface as part of the extension where invoking the third-party application is not possible.



Test Execution Engine

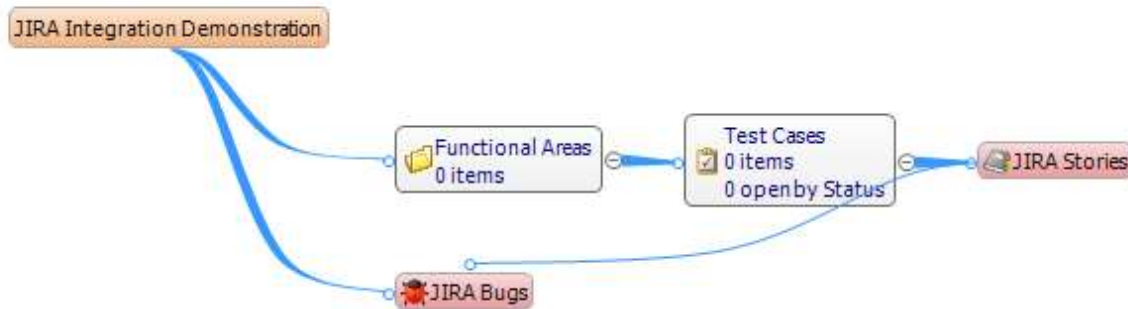
The Test Execution Engine is purely for Dynamic Manual Testing, through TestDrive-Assist, and provides the ability to create an item in the third-party application, such as defect, at the point of saving the TestDrive-Assist results. The Test Execution Engine provides the ability, subject to the capabilities of the third-party application, to link the TestDrive-Assist results to the newly created item. It will also create links in Qualify between the third-party item and the result set.



JIRA INTEGRATION

The JIRA Integration makes use of all three integration points.

Integrating JIRA with Qualify allows you to view and edit JIRA items in Qualify and to attach TestDrive results to a JIRA item. A typical Qualify application definition with JIRA integration may look like the following.



External Data Source

The External Data Source allows the specification of External Entities for JIRA items. In the diagram above, Stories and Bugs in JIRA have been defined as External Entities, with a relationship between Story and Bug. This allows JIRA Stories, and their associated Bugs to be displayed in Qualify.

id	summary	description	creatordisplay...	createdDate	updateDate	priorityname	dueDate	statusname	assigneddisplay...
▼ projectname: Order Entry Web (3)									
10026	Democratization for Brandy		Timothy Bower	25 Apr 2014 2...	29 Apr 2014 1...	Major		Open	
10027	As a user, I'd like a Contact Us p...	The Contact Us page should have a link from the Navigation b...	Timothy Bower	23 Apr 2014 1...	29 Apr 2014 1...	Minor		Open	
10025	As a user, I'd like a Home page t...	The Home page should have a navigation bar that has links to t...	Timothy Bower	22 Apr 2014 3...	29 Apr 2014 1...	Critical	15 May 2014 6...	Open	
▼ projectname: Sample Screen Project (29)									
10030	This is a test Bug Story		Kashif Hughes	28 Apr 2014 1...	29 Apr 2014 1...	Critical		To Do	
10024	This is a new story created from...	This is where you would put some descripiton.	Timothy Bower	17 Apr 2014 2...	17 Apr 2014 2...	Major	30 May 2014 6...	To Do	
10023	CLONE - As a user, I'd like a hist...		Timothy Bower	17 Apr 2014 3...	17 Apr 2014 2...	Critical		To Do	Timothy Bower
10022	As a user, I'd like a historical sts...		Timothy Bower	26 Mar 2014 0...	17 Apr 2014 2...	Critical		Done	Timothy Bower
10021	As a user, I'd like a historical sts...		Timothy Bower	26 Mar 2014 0...	05 Apr 2014 1...	Major		Done	Timothy Bower
10020	As a user, I'd like a historical sts...		Timothy Bower	26 Mar 2014 0...	02 Apr 2014 2...	Trivial		Done	Timothy Bower
10019	As a user, I'd like a historical sts...		Timothy Bower	26 Mar 2014 0...	31 Mar 2014 1...	Major		Done	Timothy Bower
10018	As a user, I'd like a historical sts...		Timothy Bower	26 Mar 2014 0...	30 Mar 2014 0...	Critical		Done	Timothy Bower
10017	As a user, I'd like a historical sts...		Timothy Bower	26 Mar 2014 0...	27 Mar 2014 0...	Minor		Done	Timothy Bower

id	summary	description	issuetype...	created...	resolu...	resolu...	creator...	reporter...	updated...	priority...	status...	status...	assigneddisplay/Name
1...	This is a test bug created in J...		Bug	28 Apr 2...			Kashif M...	Kashif M...	29 Apr 2...	Major	To Do		

The External Entities behave just as a normal Qualify Entity, allowing different grid layouts, displaying as a chart and using features such as Find and groupings. The only feature that is not currently available for External Entities is Filter.



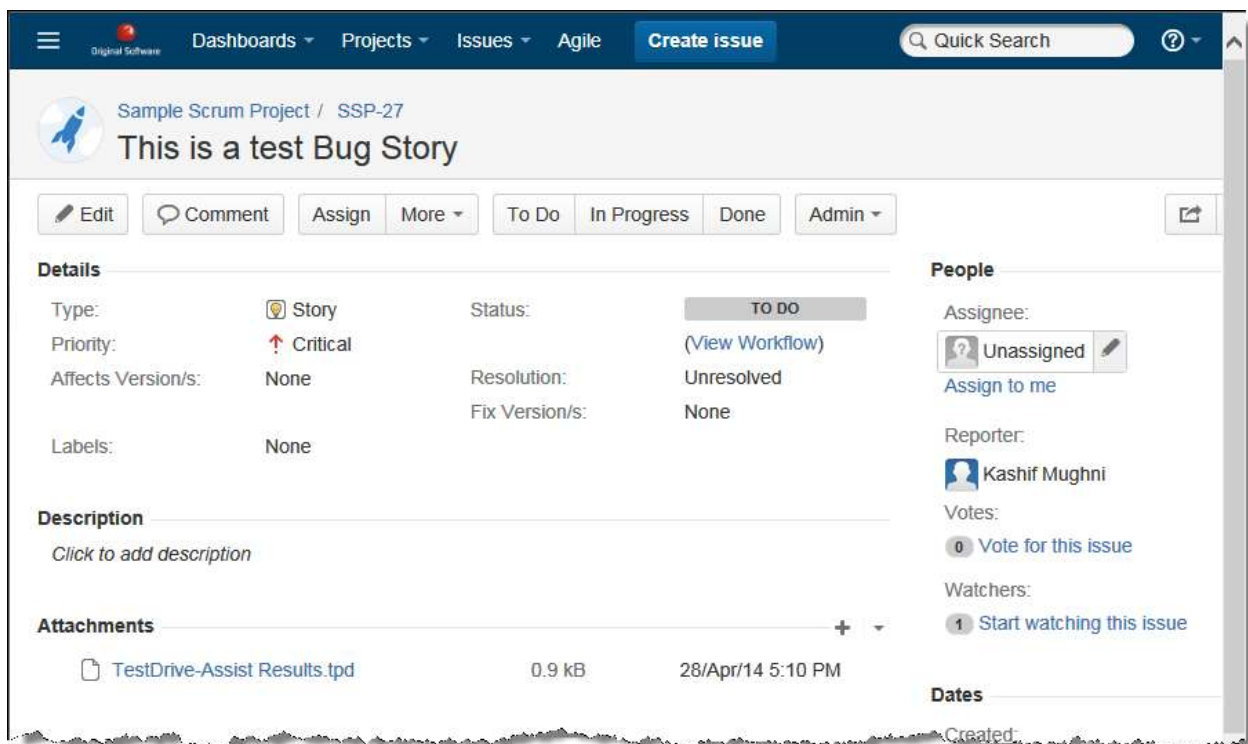
User Interface Extension

The User Interface Extension for the JIRA Integration provides a mechanism to create and edit JIRA items from Qualify. In order to maintain the integrity of data being added or changed, the JIRA user interface is used.

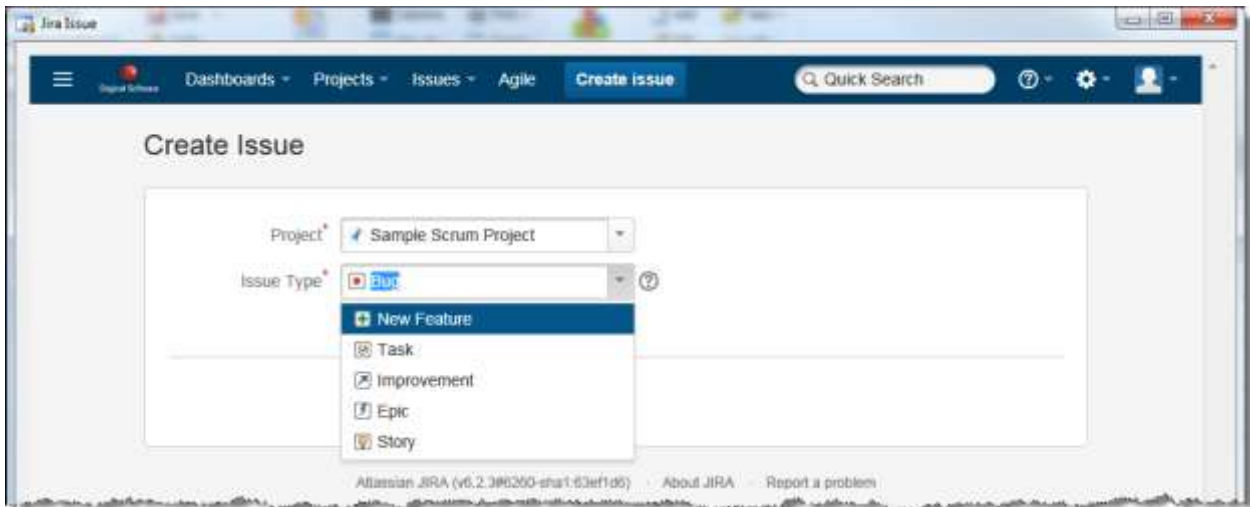
As is normal in Qualify, a right click and Edit will allow the user to edit a JIRA item.



Selecting Edit will open the JIRA item in a browser window for editing.



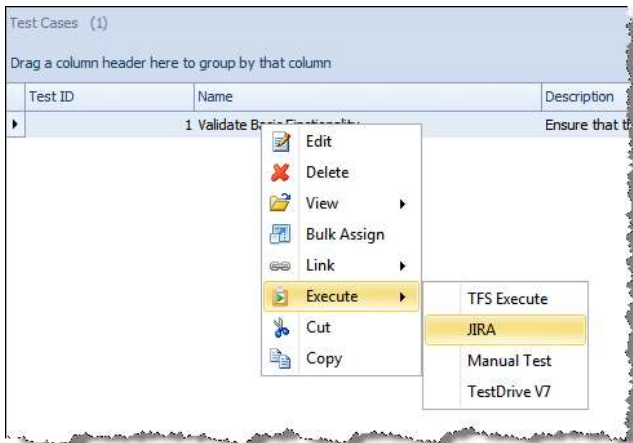
Similarly, selecting Add from the right click menu will open the JIRA Create Issue window, this time in a Qualify dialog hosting the JIRA Create Issue page.



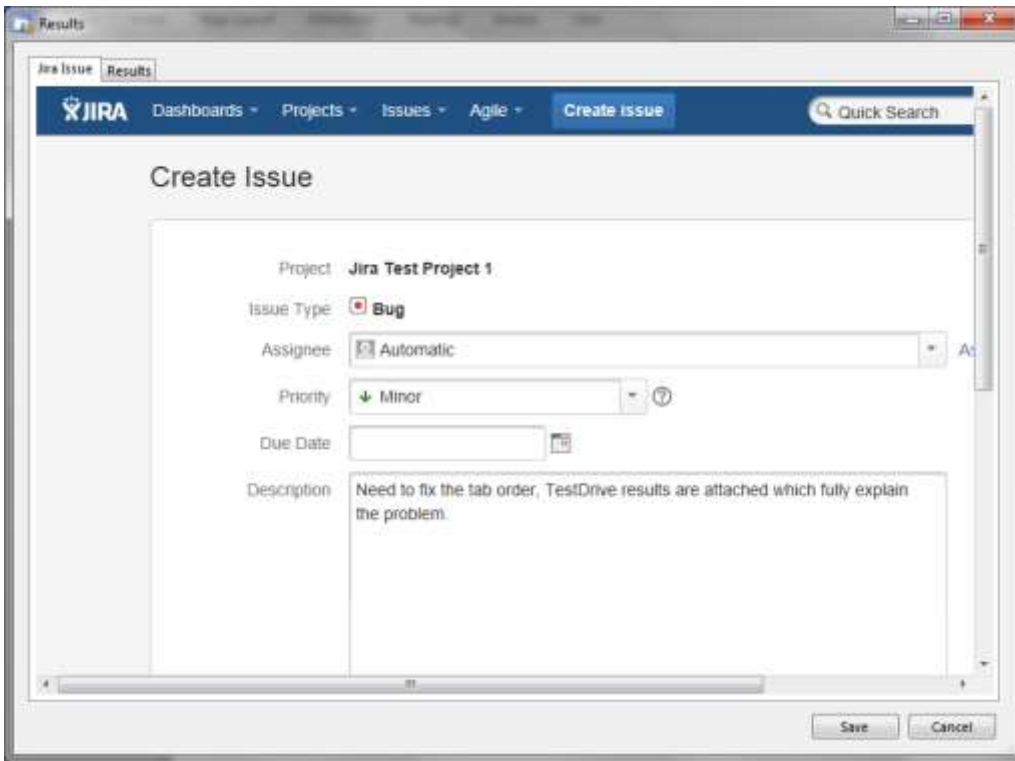
The JIRA Integration User Interface Extension does not allow the deletion of JIA items. This must be done through the main JIRA User Interface. However, deletion of items in JIRA is not recommended and they should be set to an inactive status instead.

Test Execution Engine

The Test Execution Engine provides a mechanism for executing a manual test, through TestDrive-Assist, with the option to create a JIRA item at the point of saving a set of results. The JIRA Test Execution Engine will appear as an option when electing to Execute an item in Qualify, such as a Test Case.



On completion of the manual test, when saving the results, the option to Create a JIRA item will be presented to the user.



A link to the result set will be attached to the item in JIRA, allowing the opening of the associated result set.

